



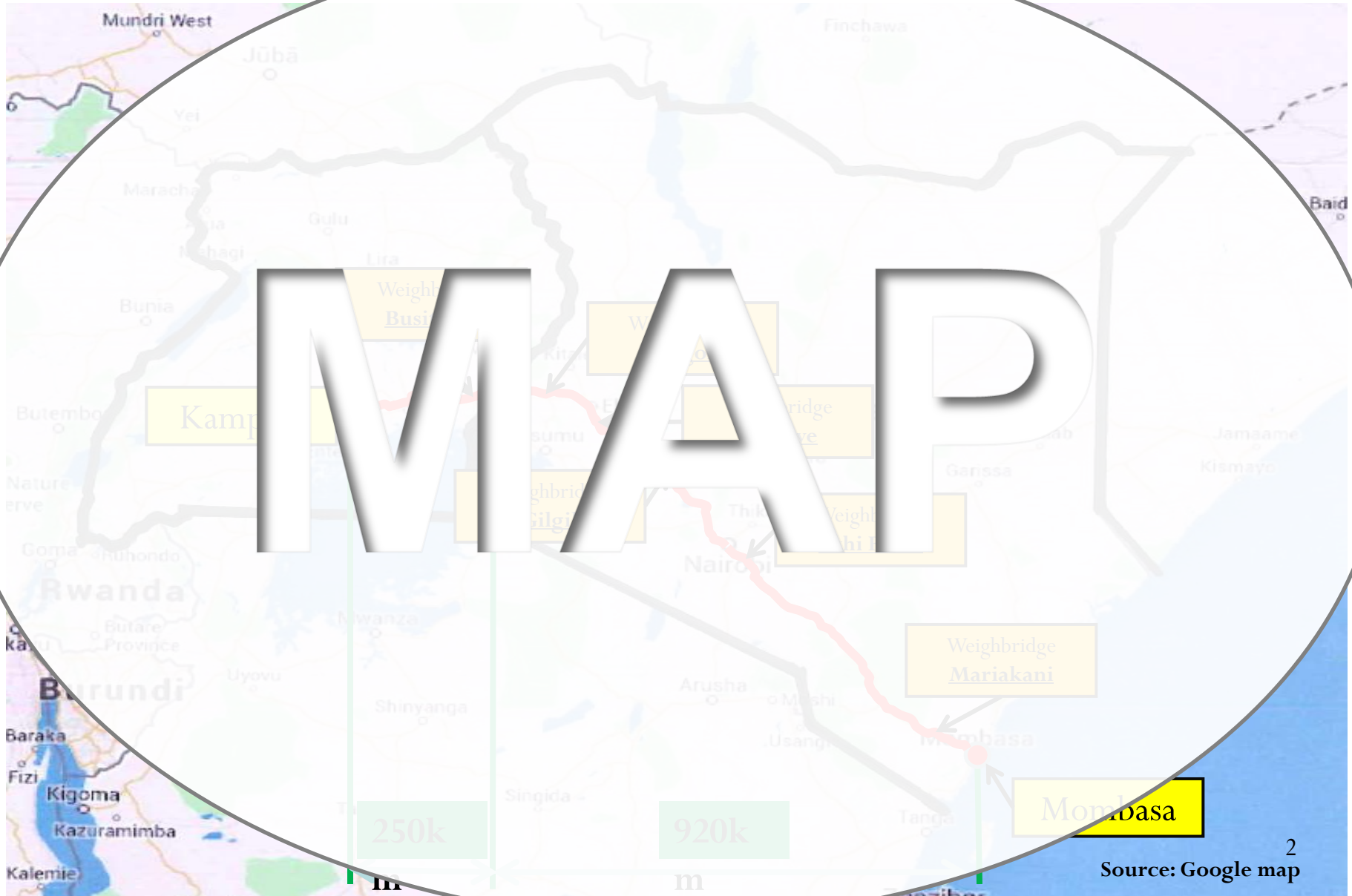
WORLD CUSTOMS ORGANIZATION
ORGANISATION MONDIALE DES DOUANES

TRS Process mapping

Dhaka, Bangladesh, 29 April 2014

Shigeaki Katsu
Trainer, Customs Training Institute,
Ministry of Finance, Japan

TRS Result Example



TRS Results Example



Mombasa Port

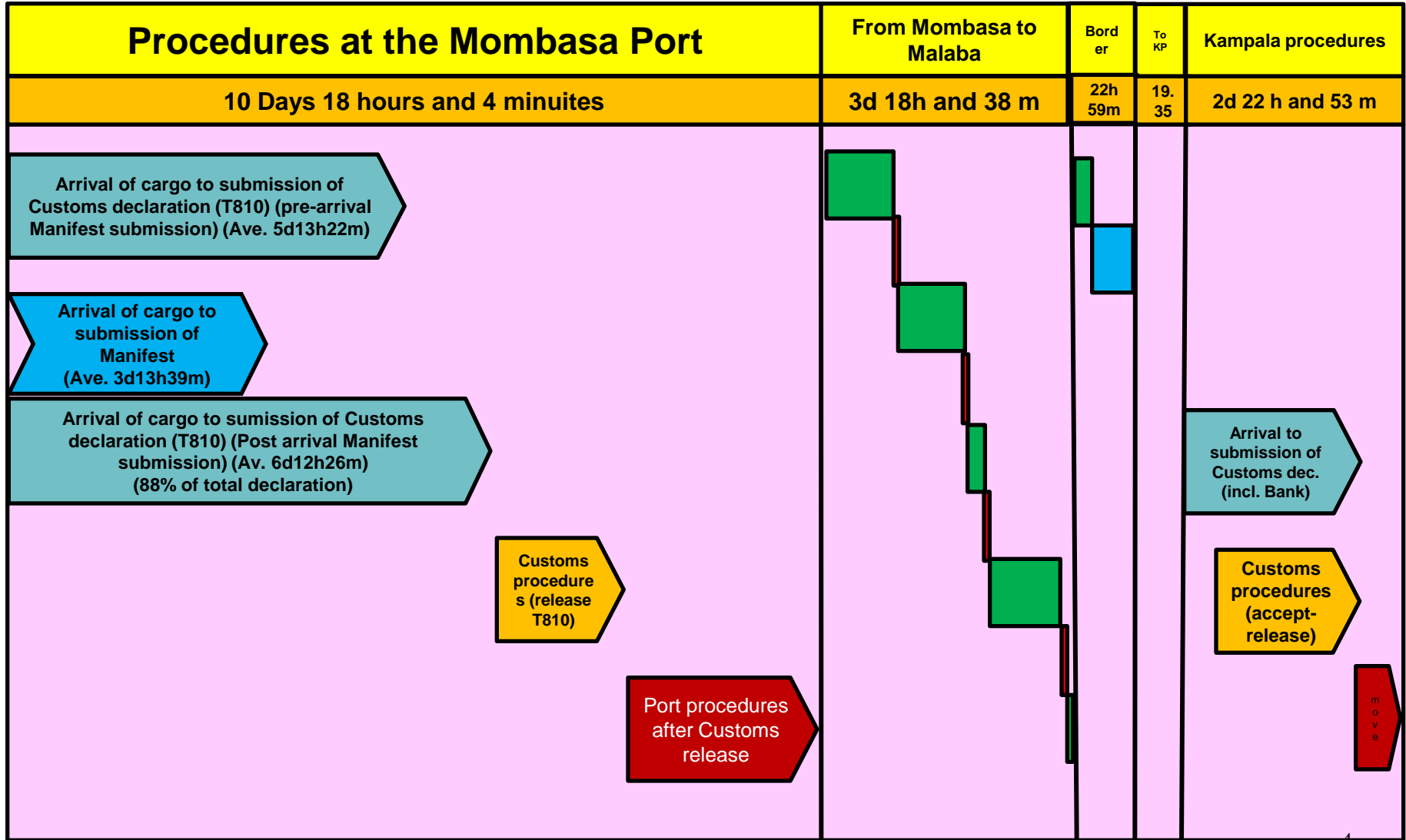
Weighbridge



Kenya Uganda Border



TRS: Results Kenya-Uganda



TRS Questions

Who?

Where?

Which?

What?

When?

How?

TRS Preparation: What to Discuss

(Who)

Points	Example
Who has necessary data?	<ul style="list-style-type: none">- Customs- Trade related Government Agencies- Port/airport Authority- Customs Broker (Agent)- Freight Forwarder, Truck company,- Warehouse Operator, etc.

TRS Preparation: What to Discuss

(Who)

Points	Example
Who should be in charge of TRS within Customs Administration?	<ul style="list-style-type: none">- Director of Facilitation- Director of Customs Clearance
Who should be involved in TRS within Government Agencies?	<ul style="list-style-type: none">- Department of Trade- Department of Quarantine- Police Department
Who should be involved in TRS from Private sectors?	<ul style="list-style-type: none">- Customs Brokers- Forwarders, Carriers- Warehouse Operators- Banks

TRS Preparation: What to Discuss

(Where)

Points	Example
Where are the necessary data exist?	<ul style="list-style-type: none">- Computer System- Customs house (manual process)- Trade related agencies- Private sector
Where are the cargoes are exist?	<ul style="list-style-type: none">- Container yard- Customs area- Private warehouse- On a truck or train

TRS Preparation: What to Discuss

(Which)

Points	Example
Which means of transport should be included?	Air, Sea, Rail, Road, River
Which Customs House should be involved in TRS?	- Airport, Seaport and/or Land Post for Transit
Which Type of goods should be included?	All, FCL, LCL, Conventional
Which steps should be involved?	<ul style="list-style-type: none">- Arrival of goods- Unloading of goods- Customs inspection- Procedures of OGAs- Release permission

TRS Preparation: What to Discuss

(What)

Points	Example
What kind of procedures should be included, automated (ICT) Customs procedures or manual (Paper Basis) procedures only?	Both manual and automated (ICT) Customs procedures
What value criteria of goods should be set ?	<ul style="list-style-type: none">- High, medium, low value- Dutiable and non-dutiable

TRS Preparation: What to Discuss

(What)

Points	Example
What criteria of Customs intervention should be measured ?	Physical inspection, X-ray inspection, Documents examination and No inspection
What processes should be included?	<ul style="list-style-type: none">- Import procedure- Export procedures- Transit (domestic/international)
Should Lab. Analysis be included as a criteria?	<ul style="list-style-type: none">- Yes- No

TRS Preparation: What to Discuss

(What)

Points	Example
What steps of government and private sector's procedures should be included?	<ul style="list-style-type: none">- Immigration procedures- Police inspection- Transport Authority's inspection- Quarantine's examination and inspection- Customs examination and inspection- Banking procedures- Weighbridge's procedures- Warehouse operator's procedures

TRS Preparation: What to Discuss

(When)

Points	Example
When is the target timing of the TRS?	- April, May - October
How many days are necessary for the TRS?	Duration of the Study is 4 consecutive weeks or more

TRS Preparation: What to Discuss

(How)

Points	Example
How do you organize the overall schedule?	<p><u>1 week</u> for data collection on procedures under the trade related agencies</p> <p><u>2 week</u> for data collection on procedures under the trade related agencies and Customs</p> <p><u>3rd & 4th week</u> for data collection of Customs and release of goods</p>

TRS Preparation: What to Discuss

(How)

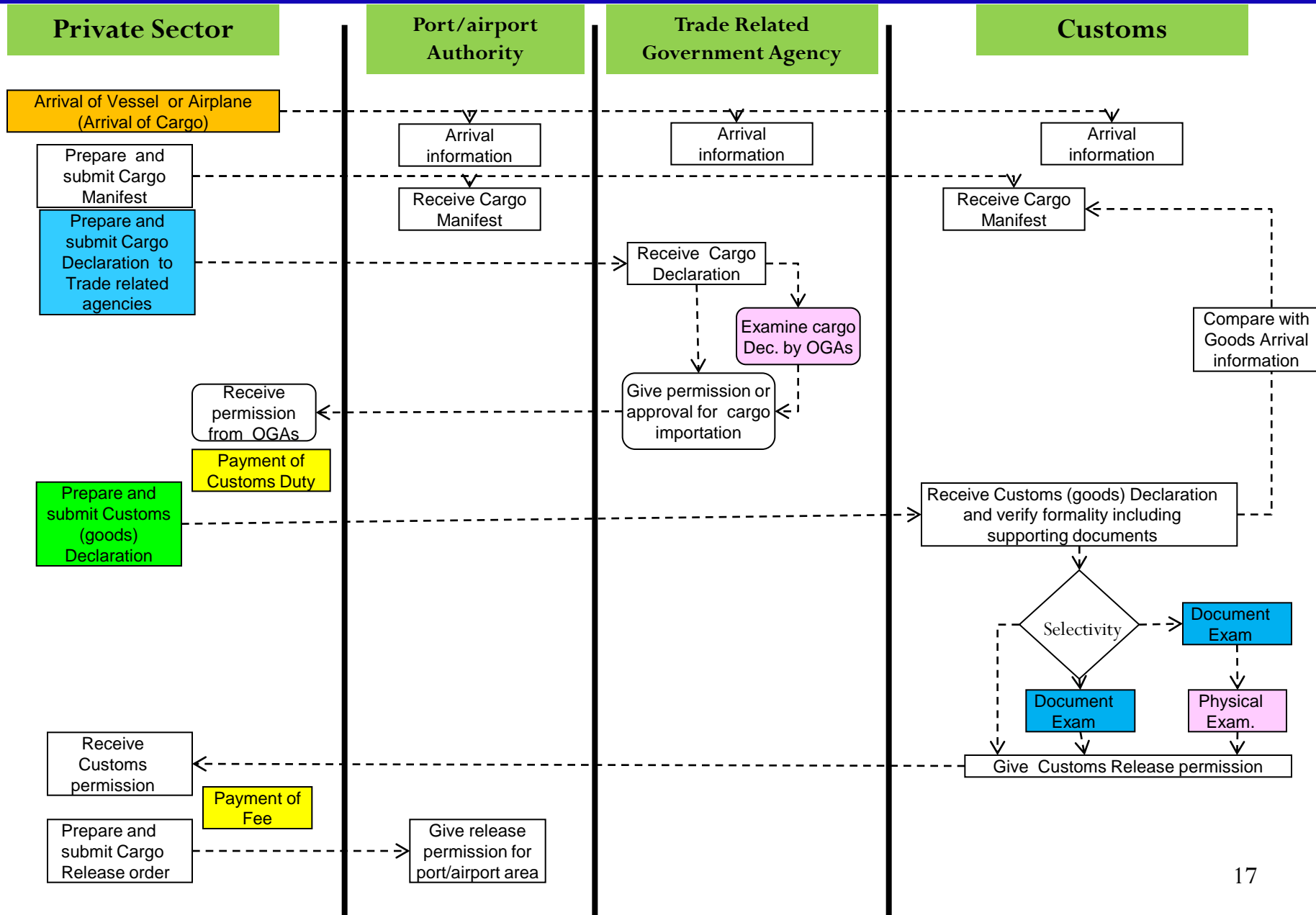
Points	Example
How many samples should be take into account?	<ul style="list-style-type: none">- 20% of all Customs declaration- 300 for each category
How should samples be selected?	Use last one/two digit of Customs declaration Number
How can you get necessary data on “arrival of goods”?	<ul style="list-style-type: none">- Shipping or Airline companies- Carriers (Truck drivers)- Customs brokers

TRS Preparation: What to Discuss

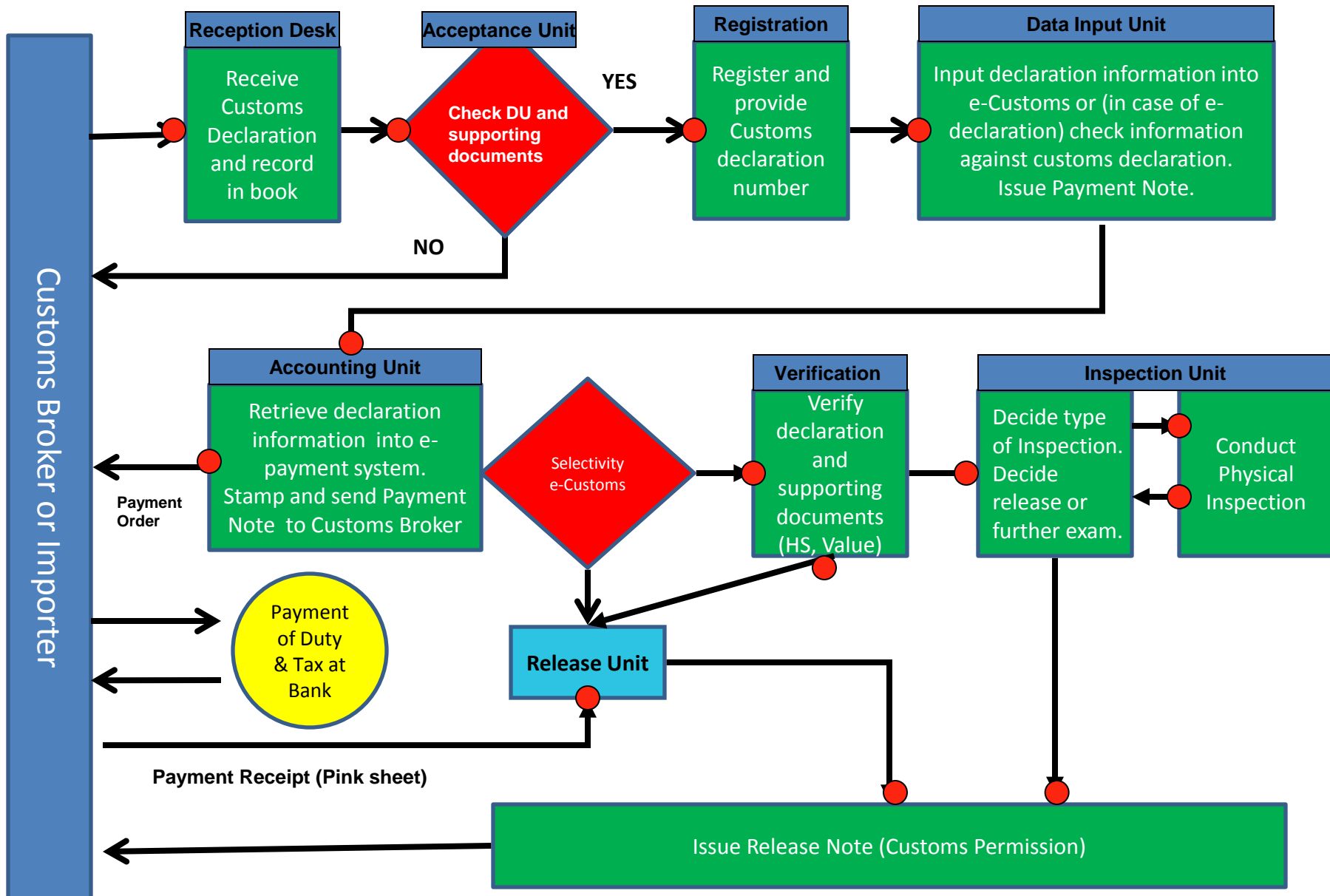
(How)

Points	Example
How can you get necessary data on “unloading of goods”?	Port Operator/Warehouse Operator
How can you get necessary data on “Customs inspection”?	Customs House
How can you get necessary data on “Intervention by trade related agencies” ?	Trade Related Government Agencies
How can you get necessary data on “Release”?	- Customs House - Warehouse Operator

TRS Process Flow Chart



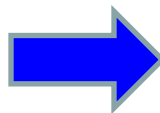
Example of Business Process of Customs sea cargo clearance procedure



● Red circle shows the point of measuring time

Thank you for your kind attention.

For more information,
please visit:
www.wcoomd.org



« Copyright © 2013 World Customs Organization. All rights reserved. Requests and inquiries concerning translation, reproduction and adaptation rights should be addressed to copyright@wcoomd.org ».

The screenshot shows the WCO website interface. At the top, there is a logo for the World Customs Organization (Organisation Mondiale des Douanes) and a language selector set to English. Below the logo is a navigation menu with options: ABOUT US, MEDIA, ONLINE SERVICES, TOPICS, and EVENTS. A search bar is located to the right of the menu. The main content area is titled 'INSTRUMENTS AND TOOLS' and includes a breadcrumb trail: 'You are here: World Customs Organization > Topics > Procedures and Facilitation > Instruments and Tools'. The left sidebar contains a list of categories: NOMENCLATURE AND CLASSIFICATION OF GOODS, VALUATION, DISEASE, ENFORCEMENT AND COMPLIANCE, PROCEDURES AND FACILITATION (with a dropdown arrow), Overview, News, Activities and Programmes, Instruments and Tools (with a dropdown arrow), Conventions, Recommendations, Tools, Resources, Partners, CAPACITY BUILDING, INTELLECTUAL PROPERTY, RESEARCH, and KEY ISSUES. The main content area is divided into sections: 'INSTRUMENT AND TOOLS' (with a dropdown arrow), 'Conventions' (listing the Revised Kyoto Convention, The ATA System, and The Customs Convention on Containers), 'Recommendations' (listing Recommendations for securing the highest degree of harmonization), and 'Tools' (listing informal publications). Below these is a 'Highlights' section featuring a grid of six document covers: Revised Kyoto Convention, Time Release Study, SAFE (Safety and Facilitation of Air Transport), Globally Networked Customs Concept, Data Model, and Compromise: How to Build a Single Window Environment. The page number '20' is visible in the bottom right corner.